



Scalable solutions that grow with you...

Viewer for MS Outlook Messages

[direct viewer for mail files](#)

This tool allow to read/open the message files (.msg, .eml, .mht) on any computer.

You may read the message with all mail information (subject, body, recipients, attachments, forwarded messages etc), contact, note, task, appointment, journal, post item

An application don't use any external libraries (no MS Outlook, no CDO, no MAPI etc) and you may run this tool on computer without any additional setup/install.

For example, extract all attachments from mail and save with original file name.

You may see the full mail information (transport header, attributes and properties etc), internal structure (all streams supported) and data in mail window.

When message file loaded, you may save the data to different file formats (Text, HTML, XML, EML, MSG etc) or copy to clipboard.

Multilingual support allows to translate the interface to any language

Visit the web site at <http://www.scalabium.com/msg> to see if updated information is available.

Download

You may download and use the trial version free-of-charge for 30 days only. If after 30 days you would like to continue using it, then you should purchase a license.

The trial version have the next demo limitations:

- each time after running you will see a nag.screen
- only first 50 characters extracted from every stored property (subject, body, recipient etc)
- you can save the one attachment only in trial

After license purchase and activation of registered version (using personal serial number) the any limitations will be removed.

To download the trial version: <http://www.scalabium.com/download/msgview.zip>

Support

Don't hesitate to contact us for further information, we are glad to be at your disposal.

Thanks for your interest in our products and web site. Your experience with it is very important to us. Please take a moment to let us know what you like and don't like about it.

Here is how to contact us for tech support or to give us feedback on our products or web site.

e-mail mshkolnik@scalabium.com or mshkolnik@yahoo.com

mailing list <http://groups.yahoo.com/group/SMComponents>

newsgroups UNCONVERTED WINHELP MACRO:!

ExecFile("news://news.scalabium.com")<news://news.scalabium.com>

You may contact us with any questions and propositions. Please do not hesitate to contact me if there is any additional information.

When reporting problems, please include the following information:

- Is the problem reproducible? If so, how?
- What version of Windows are you running? (Windows 95, Windows 98, Windows NT 4.0, Windows ME, Windows 2000, Windows XP, Windows 2003, Vista or Windows 7)
- What a product and product version are you running?
- What a serial number and key (only for registered users) of installed product?
- If a dialog box with an error message was displayed, please include the full text of the dialog box, including the text in the title bar.

Outsourcing service

We provide software development (custom components, applications and tools), database engineering and consulting by remote contracts. If you're interested in such kind of cooperation, [contact us](#). Our team is opened for discussion.

Prices and license types

In the table below you'll find the license fees:

1 license: 20 EUR
10 license pack: 190 EUR
40 license pack: 700 EUR
65 license pack: 900 EUR
100 license pack: 1400 EUR
200 license pack: 2500 EUR
site license: 5000 EUR

For site or OEM/resale please contact to [sales](#)

** all prices are presented in EUR (euros) but some registration service have a multi-currency payment system with automatical conversion into local currency (for example, in dollars for USA)

License types

One license: one license allow to work with this software on one computer only (one person). You need as many licenses as the computers wherein our product will be installed and/or used.

Site license: you can install and use our product on an unlimited number of computers in one domain.

Please note that we can issue a single-user license to a person name only. If you wish your license to be issued to an organization name, you should buy either a multi-user license or several single-user licenses.

Order/registration

Products can be ordered online over the Internet using VISA, MasterCard or American Express credit card, PayPal, Toll Free Phone, 24 Hour Fax, or Postal Mail at following sites:

1 license UNCONVERTED WINHELP MACRO:!

```
ExecFile("https://store.payproglobal.com/checkout?products[1]  
[id]=15412")https://store.payproglobal.com/checkout?products[1]  
[id]=15412
```

10 licenses pack UNCONVERTED WINHELP MACRO:!

```
ExecFile("https://store.payproglobal.com/checkout?products[1]  
[id]=15441")https://store.payproglobal.com/checkout?products[1]  
[id]=15441
```

40 licenses pack UNCONVERTED WINHELP MACRO:!

```
ExecFile("https://store.payproglobal.com/checkout?products[1]  
[id]=15443")https://store.payproglobal.com/checkout?products[1]  
[id]=15443
```

65 licenses pack UNCONVERTED WINHELP MACRO:!

```
ExecFile("https://store.payproglobal.com/checkout?products[1]  
[id]=95819")https://store.payproglobal.com/checkout?products[1]  
[id]=95819
```

100 licenses pack UNCONVERTED WINHELP MACRO:!

```
ExecFile("https://store.payproglobal.com/checkout?products[1]  
[id]=15440")https://store.payproglobal.com/checkout?products[1]  
[id]=15440
```

200 licenses pack UNCONVERTED WINHELP MACRO:!

```
ExecFile("https://store.payproglobal.com/checkout?products[1]  
[id]=95820")https://store.payproglobal.com/checkout?products[1]  
[id]=95820
```

site license UNCONVERTED WINHELP MACRO:!

```
ExecFile("https://store.payproglobal.com/checkout?products[1]  
[id]=38997")https://store.payproglobal.com/checkout?products[1]  
[id]=38997
```

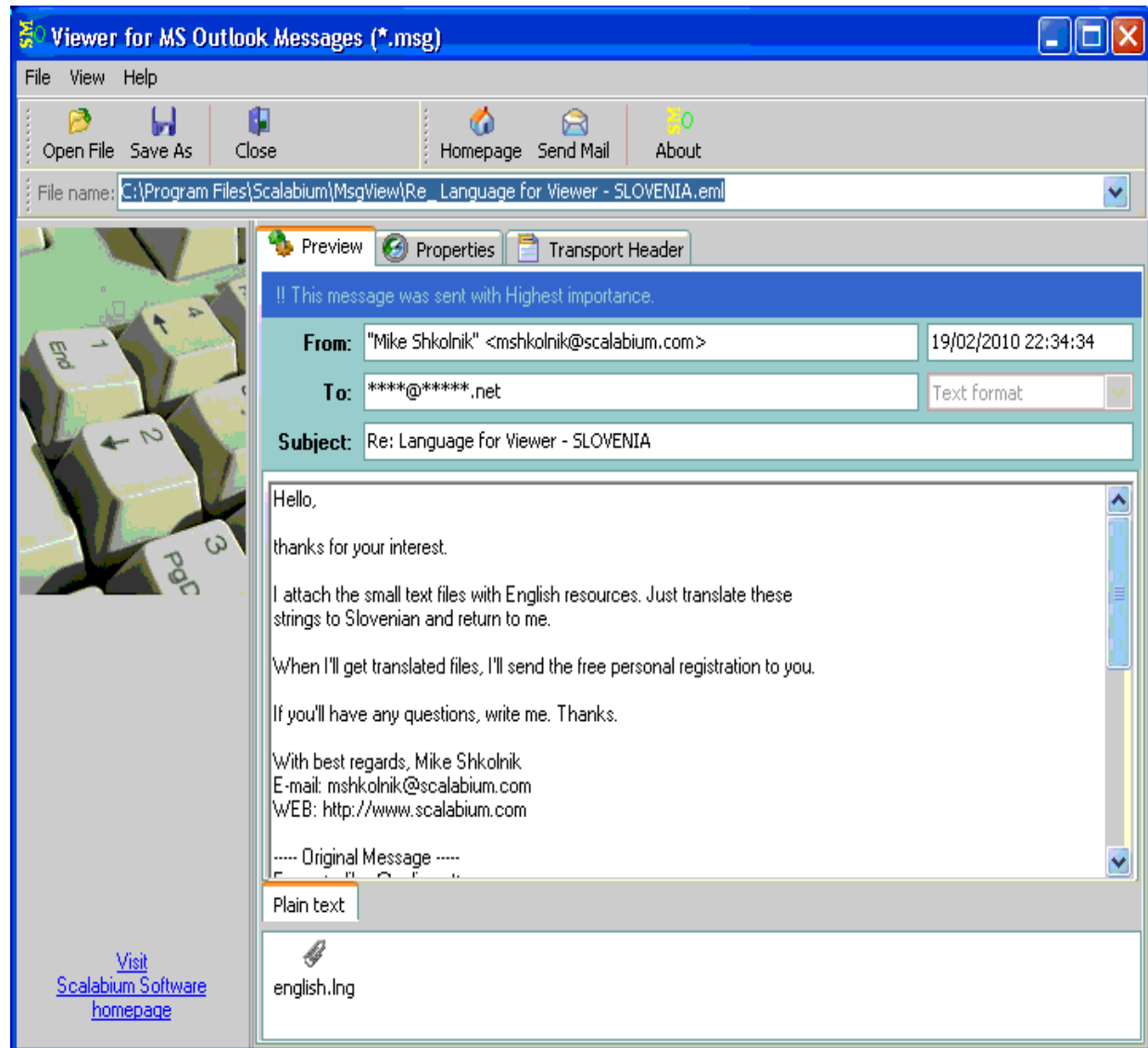
What you will get when you register

- Delivery is done by sending you a registration code (which turns the evaluation copy into the fully registered version) via email.
- Demo limitations and nag screens are removed
- Upgrades are free during 1 (one) year. You will be notified of updated versions and they will be send by e-mail on personal request.
- Technical support by e-mail (please quote your serial number) during 1 (one) year.

File Open

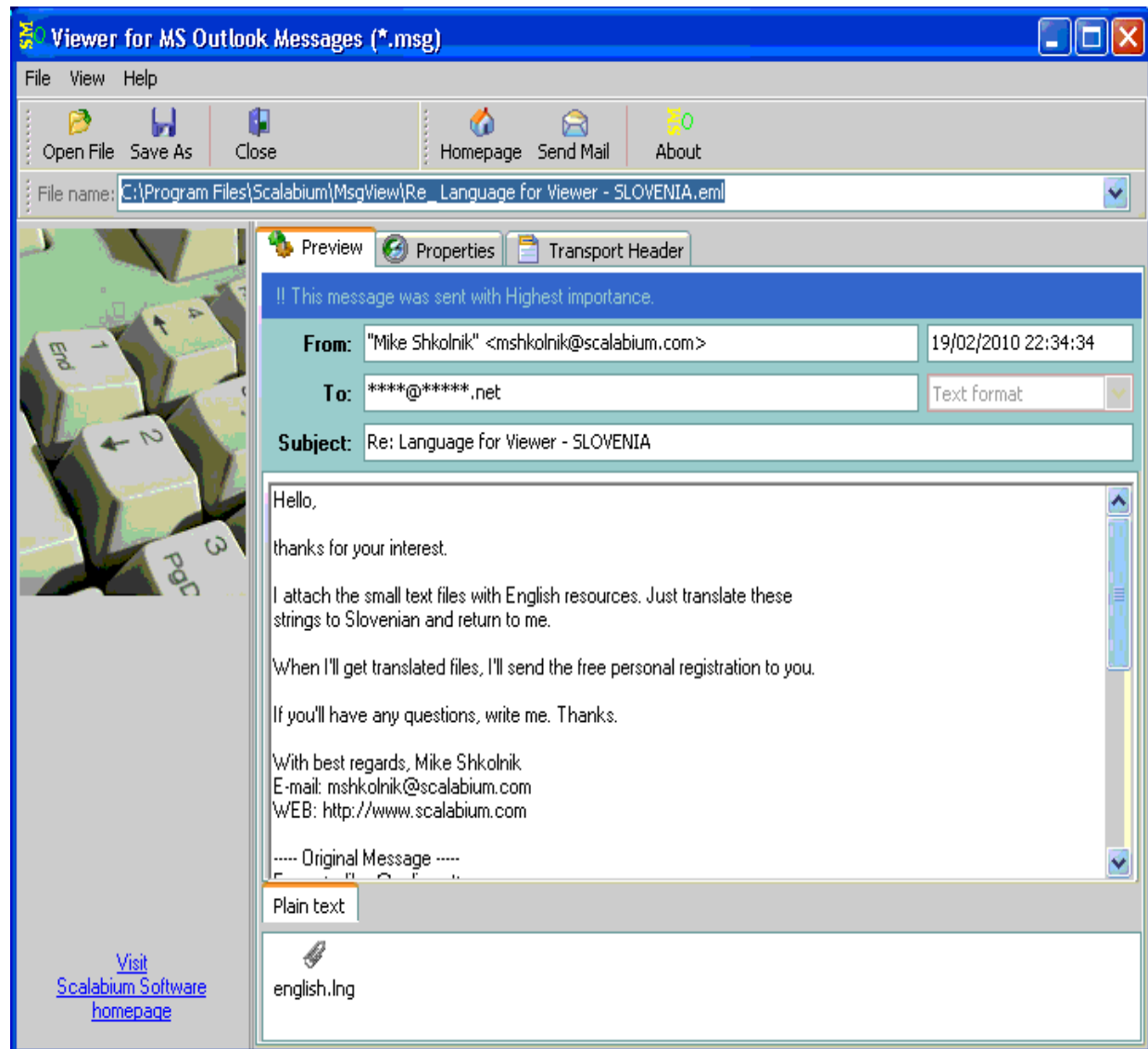
To open the db-file for view you must click on Open File button in toolbar or select the Open item in File menu

When you will select the message file that you want to view, this file will be opened automatically and all information will be displayed in main form



Preview

When the selected mail file is opened, you may see the message details with all mail information (subject, body, recipients, attachments, forwarded messages etc) in Preview tab:



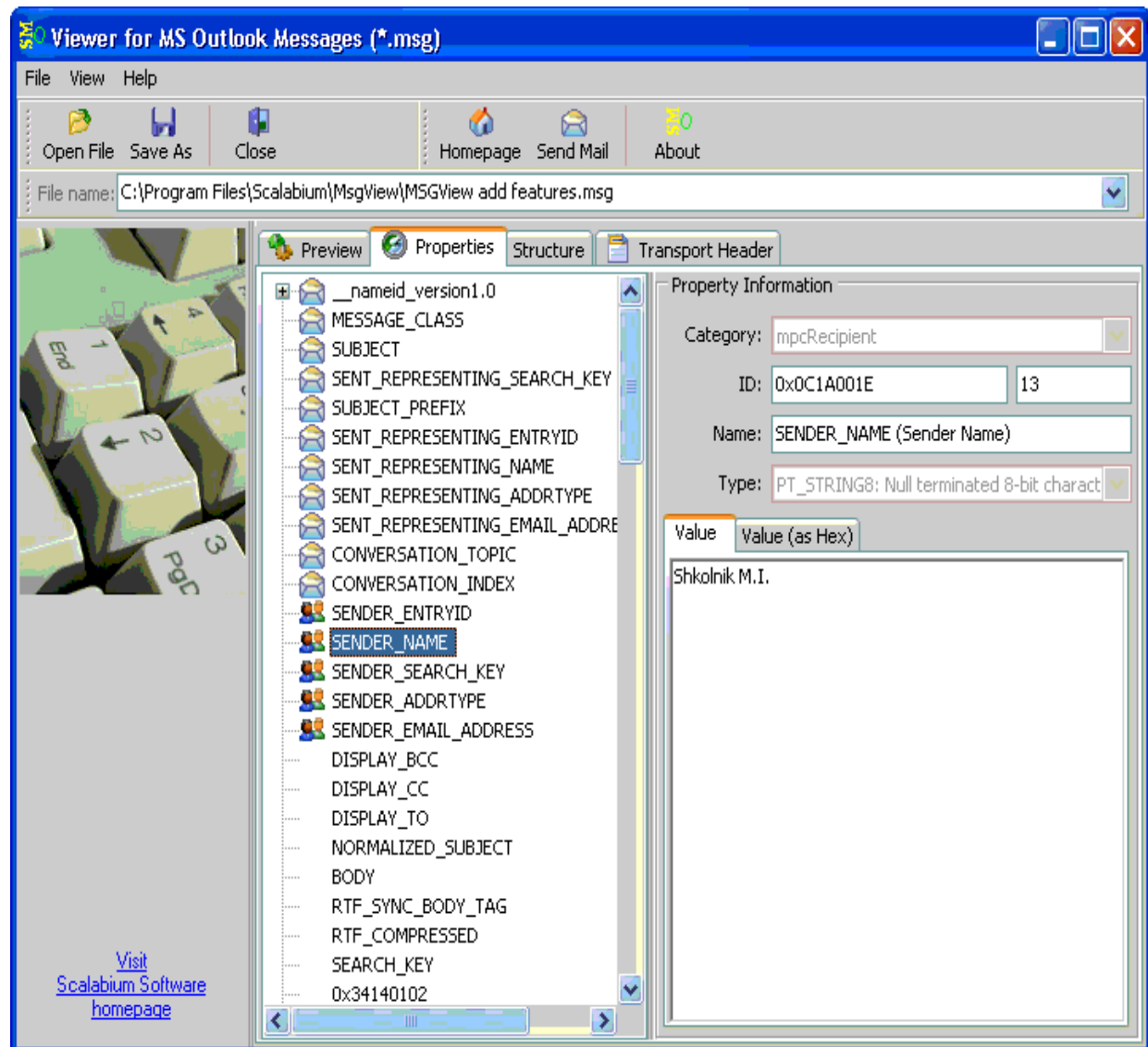
If loaded message have the body attribute in different formats (plain text, richtext, html), you may navigate on tab in bottom of screen and view the text in any format

If mail contain the attachments and/or forwarded mails, in bottom of window you'll see the list of items. To open/view or save the any item you may click in list on open the context menu (right mouse button)

As alternative, you may save all attachments from File menu

Properties

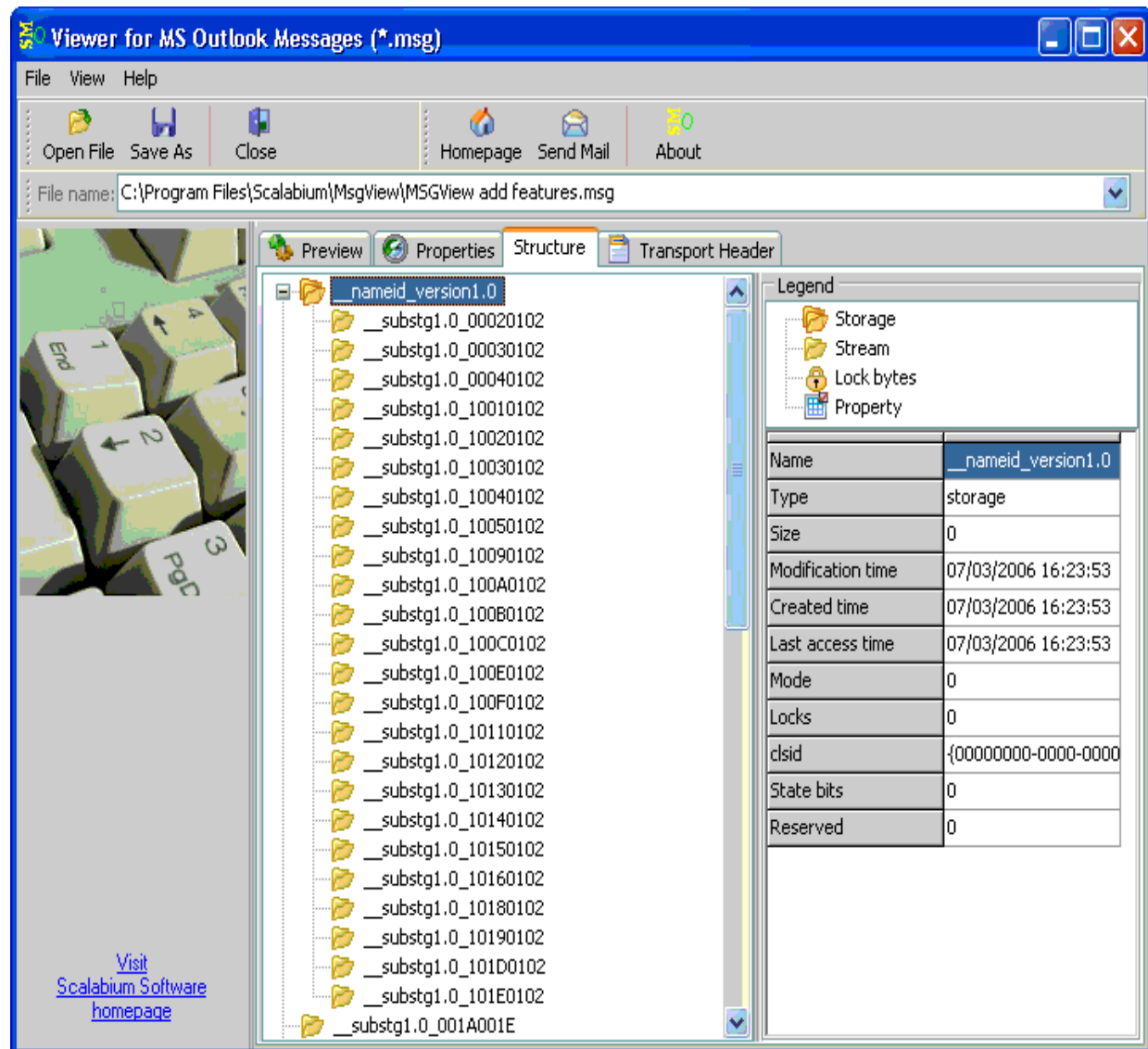
When the selected mail file is opened, you may view the details for any attribute/property in tree.



Every node in tree shows the information about corresponded attribute - category, unique ID, size, name, type and original value (text and binary)

Structure

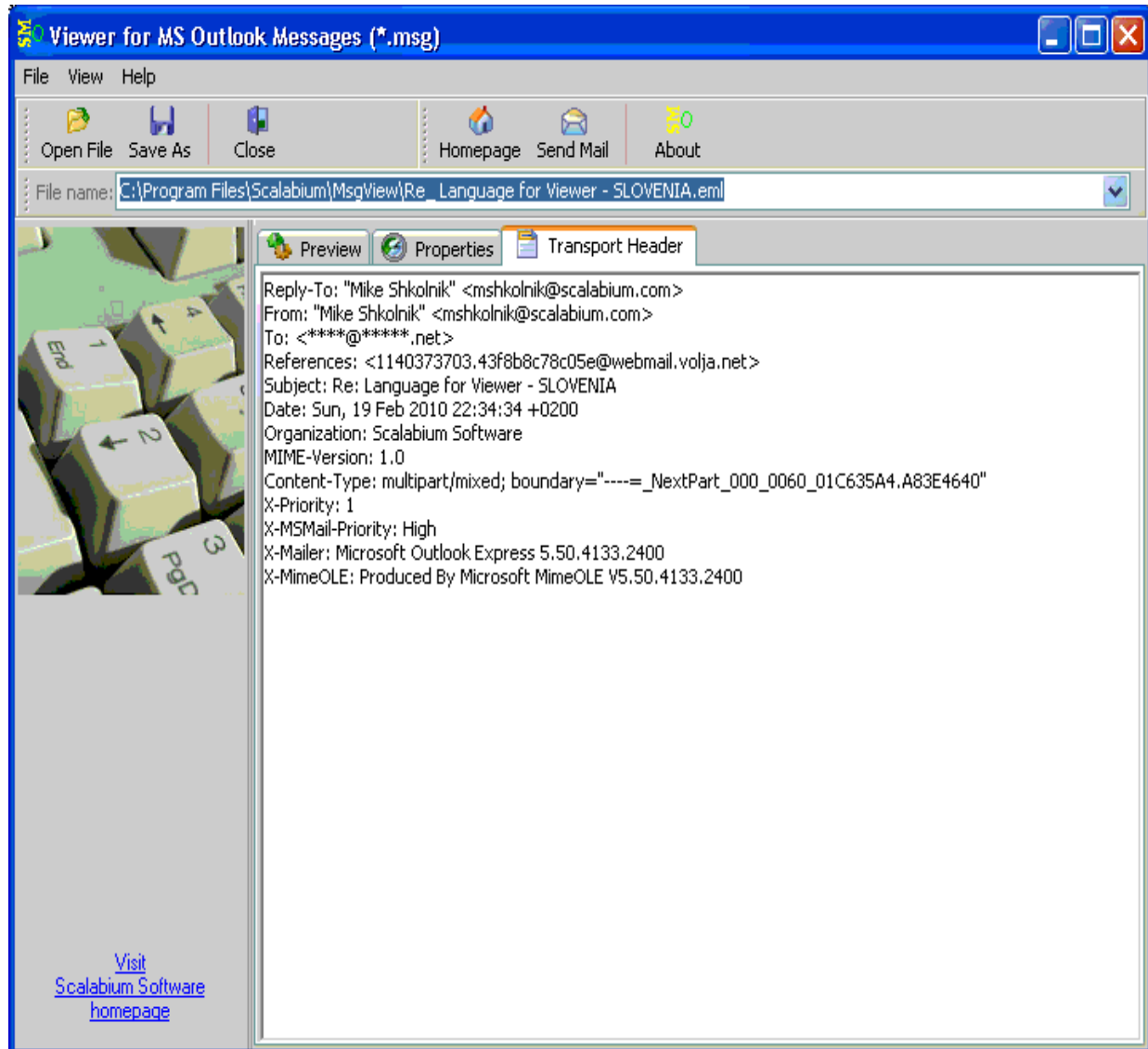
When the selected mail file is opened, you may investigate the internal structure of message (storages, streams etc) in tree.



You may navigate (scroll) thru node list and view the detailed information about names, types, sizes and date/times (creation, modification, last access) etc

Transport Header

When the selected mail file is opened, you may investigate the header of mail with transport details (if present in file).



Usually there stored all technical information about mail routing and transporting including original IP address of sender

Save As

When selected message file opened, you may save the loaded information into external file.

The next formats supported:

TXT text files

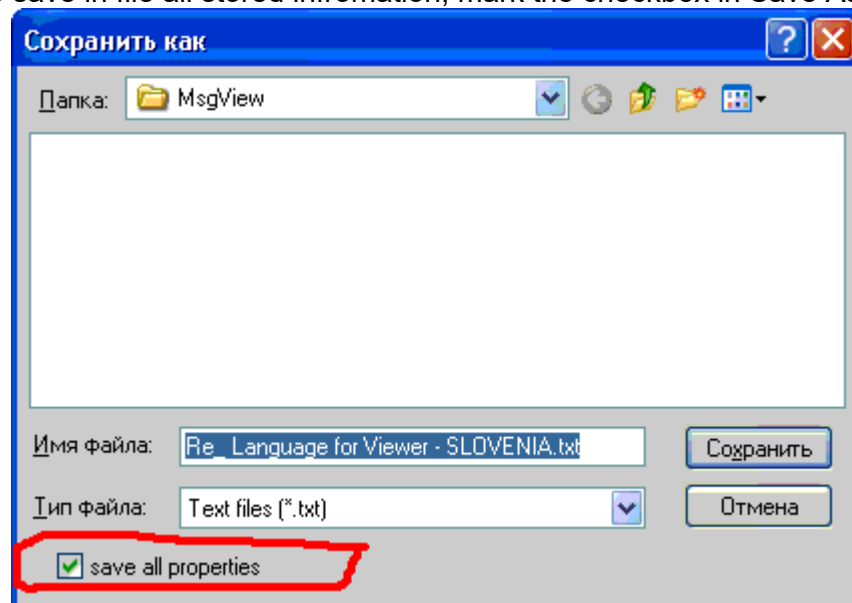
HTML html files

XML xml files

EML mail files

MSG MS Outlook messages

If you want to save in file all stored information, mark the checkbox in Save As dialog:



Else if the checkbox is not marked, only general information (subject, body, date, sender, recipient etc) saved

To save the information you must click on Save As button in toolbar or select the item in File menu.

Also you may select the same item from context popup menu for grid.

Copy to clipboard

When selected message file opened, you may copy the loaded information into clipboard.

To copy the information you must select the Copy to Clipboard item in context popup menu for editor.

Command-line arguments

Viewer for MS Outlook Messages supports the wide list of command-line arguments. You may use these extended parameters to control the any functionality.

msgview.exe [<mail_file> [/e] [txt|htm|xml|eml|msg] [destination_file]] [/all] [/noini] [/nologo] [/nomenu] [/BASIC|SIMPLE] [/defformat=TEXT|RTF|HTML] [/lang=] [/left=] [/top=] [/width=] [/height=]

A few samples:

- to start the tool in standard interactive mode

`msgview.exe`

- to start the tool and open the mail file automatically

`msgview.exe c:\data\country.db`

- to convert the mail file to text-file

`msgview.exe c:\data\country.msg /e txt`

- to convert the mail (country.msg) to text file with custom file name

`msgview.exe c:\data\country.msg /e txt d:\output\data0026.dat`

- to publish the mail to web-page (html-format)

`msgview.exe d:\country.msg /e htm x:\inetpub\wwwroot\countries.htm`

- to generate xml-file from mail

`msgview.exe d:\country.msg /e xml`

- to save all attributes

`msgview.exe c:\data\country.msg /e txt d:\data0026.dat /all`

- to start the tool but do not save this session in configuration file

`msgview.exe c:\data\country.msg /noini`

- to start the viewer with custom language file

`msgview.exe c:\data\country.msg /lang=LANG\german.lng`

- to start the viewer with custom windows size and position

`msgview.exe d:\country.msg /left=150 /top=100 /width=500 /height=400`

- to start the tool and hide logo and menu

`msgview.exe /nologo /nomenu`

- to start the tool in basic interactive mode

`msgview.exe /basic`

- to start the tool and use the custom default format of message
[msgview.exe /defformat=text](#)